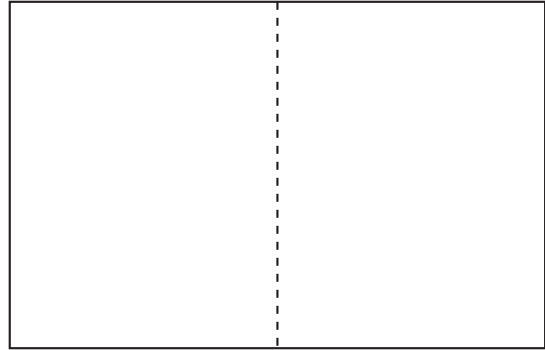


## Origami Screen Structure

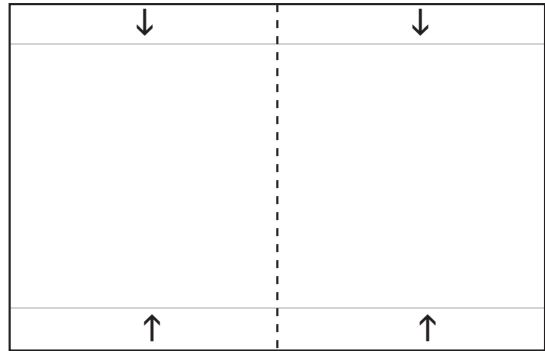
Materials:  
Card stock cut to 5.5 x 8.5" (grain short)

Solid line = cut  
Dashed line = score and fold

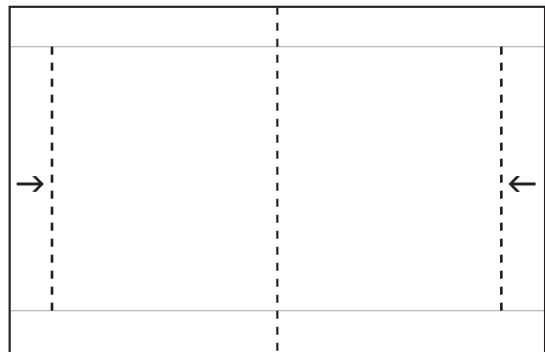
1. Fold paper in half.



2. Using a fine line pencil, lightly draw lines 1" from the top and bottom edges.



3. Using a scoring bone folder, score between the two penciled lines 1" from the right and left edges.



4. Using an X-Acto knife, cut a slit on the penciled line between the two scored lines on the upper and lower edges.

